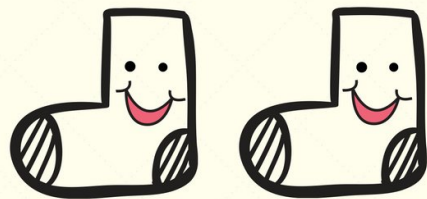


**IS YOUR BUSINESS PLANNING  
SOMETHING SPECIAL FOR VALENTINES  
DAY?**

**WELL....**



We're a  
perfect pair.

**Send your events, marketing and materials  
to the Litchfield Chamber of Commerce by  
January 28th.**

**We can't wait to help you promote your  
business!**

Send Here!

