



Litchfield Chamber of Commerce

311 N. Madison St., P.O. Box 334, Litchfield, IL 62056

217-324-2533 FAX 217-324-3559

Email: chamber@litchfieldil.com Website: www.litchfieldchamber.com

August 2009

Newsletter

Upcoming Special Events:

- City of Litchfield Drag Boat Racing August 21-23, 2009
- Business After Hours August 25th at Victory Lane Ford
- September-Night of Networking



Nikki Bishop, Executive Director

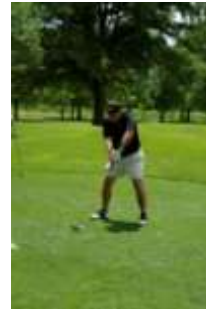
Thank you for being a member of the Chamber.

If you need assistance with anything, give us a call.

We are here to help. For more information, call us today at 324-2533.

5th Annual Golf Outing Fun for All

The **5th Annual Golf Outing** was held this year on Friday, July 31 at the Litchfield Country Club sponsored by **Unicare/Healthlink, Bishop Motors and NewWave Communications.**



Special Thanks to our teams, hole sponsors and donors:

Hole Sponsors and donors: Alterna Care Home Health Agency, Short Furniture, ITW Building Components, Inc., The Medicine Shoppe, Modern Woodman, Litchfield National Bank, Litchfield Community Savings, First National Bank, Jubelt's Bakery, Lincoln Land Community College, Hampton Inn, Evergreen Place, Healthfirst Chiropractic Neuhaus Heating and Air, McWard Law Office, Bank and Trust, Pine Ridge Homes, Simpson Insurance Services, Bergie's Heating and Air, Montgomery County Realty, Inc., First Community Bank, Unique Personnel Consultants, Refreshment Services Pepsi, A&D Electrical Supply, Inc., Bill Fleming, Diamond Imprints, Montgomery Co. Chiropractic and Golf Discount.

Golf Teams: Unicare/Healthlink, Bishop Motors, Country Financial, Refreshment Services Pepsi, ITW Building Components, Litchfield National Bank/Consolidated Communications, First National Bank, Litchfield Community Savings, Bank and Trust, NewWave Communications, Pritchard Osborne, LLC, Pine Ridge Homes/Hurst-Rosche Engineers, Inc., Unique Personnel Consultants, VFW Post #3912 & Auxiliary and Niemann Grain Farms.



Business After Hours

Mark your Calendars for the August Business After Hours to stop by and visit **Victory Lane Ford located at 903 Historic Old Route 66 North.** They will be hosting on **Tuesday, August 25**, from 5:00-7:00 p.m. Come join us and see what Gene and his staff have planned for you! If you are interested in hosting a Business After Hours, contact the Chamber.

ITW Building Components Group, Inc.

Downtown Alliance Committee

Have you seen the new construction downtown? The streetscape project has been and we are getting a well-needed face lift which should be completed by the end of December.

The City of Litchfield and the Chamber are working together to make sure all the downtown businesses are informed about the timeline of the project. If you have any questions about the status of your block or about the work being completed, please feel free to contact the Chamber or the City of Litchfield.

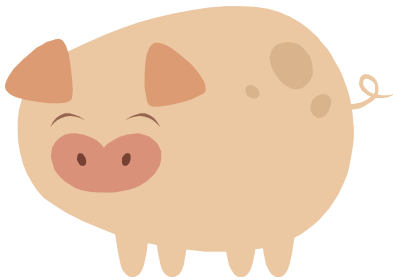
We know this is going to be a growing pay for the downtown, but the end result is going to be so rewarding so hang in there.



Due to the construction downtown, the **Farmer's Market** has been **relocated** to the parking lot across from until further notice. There is plenty of locally homegrown items available so take advantage of this great opportunity.



Business & Industry /Agribusiness Committee



GO WHOLE HOG! RAFFLE tickets are still available at the Chamber office sponsored by the Agribusiness Committee of Hillsboro and Litchfield Chamber of Commerce. The drawing will be September 8, 2009 and tickets are \$1.00 or \$5.00 for 6 tickets. Get a chance to win a whole pig and processing. Call the Chamber today!

Education Committee

The **Choices Program** will be starting in September for the 8th grade students. This program is designed for eight graders and empowers them to achieve success in pursuit of their career and life aspirations. We are still looking for two sponsors to join Pittsburgh Pipe for this program. If you are interested in helping out this year, please call the chamber office or email us at chamber@litchfieldil.com The cost is \$125.00 and it is great experience for our youth.

*Also to come is the **Adopt-A-Class** which will be starting in Sept-Oct. It is \$25.00 to sponsor a class. Look for more to come in the next newsletter.



Litchfield National Bank
Member FDIC

Don't Miss Out on this Membership News

Evergreen Place is having a back to school drive that will end August 21 and we have a studio apartment special of \$100 off your monthly rent for six months until August 31, 2009.

**Happy 4th Anniversary to HealthFirst Chiropractic on August 22.
Congratulations Dr. Amy Glaser and staff!**



VOLUNTEERS NEEDED!!

Big Brothers Big Sisters is in need of volunteers. In our Community-Based program, we currently have 15 boys and 2 girls waiting for a Big Brother or Sister. The children range in age from 6-14 years old. Being a volunteer does not take a lot of time or money. We simply ask that "Bigs" spend 10-14 hours a month with their "Little". You will enjoy activities together out in the community or in your own backyard. The schedule is flexible to fit your lifestyle. Matches are made based on personality and interests of both the Big and the Little. Please consider volunteering today. It's your chance to have fun being a kid again. It's the Little Moments that make Big magic in the life of a child. Please call Lisa at 217-556-6120 to volunteer.



Big Brothers Big Sisters will be holding a Dart Run on Sept. 12 to benefit our mentoring programs. Participants may register at the Passport Lounge at noon. Rules will be announced at time of registration. Entry fee is \$8 per person with an additional cost of \$.50 per game played. Participants will play one game of count up at participating bars, each with a different level of difficulty. Score sheets must be returned by 8 pm. Designated drivers will be available. For further information, call Connie Childers at 217-246-1702.

Event sponsors include: Action Amusement, Northgate Amusements, Set Shots, Passport Lounge, Litchfield Bowling Alley, Bob's Tap, and Hurley's Bar.

Happy 10th Anniversary to Denny's.
They invite you to celebrate with them by attending their special events
Sunday, August 30th

* Benefit for Community Food Pantry
10% of all sales donated
5 pm – 9 pm

Monday, August 31st

*All You Can Eat Pancakes - \$2.99
6 am – 12 noon



Litchfield Family Dentistry has a bunch of incentives right now.

*New Patient Exam Special - \$125.00 including Oral Cancer Testing *Crowns - \$100.00 off
*Dentures - \$100.00 off *Periodontal Disease Treatment - \$50.00 off *Invisalign - \$500.00 off

More Membership News...

Tupperware is running an amazing special the last two weeks of August. Hosts can receive **\$505 in choose your own Tupperware for only \$60!!!** It's our Record Breaker month and we are out to do just that! From Amazing hostess gifts and rewards to great customer specials ~ we have it all! **50% off** our best and most versatile products ~ the freezer safe microwavable **Vent N Serve!** Now in a new Color! Let your Tupperware consultant show you how to Save or Make Money with our products and our company! I joined this company for the discount and quickly learned there was money to be made with it! Seven years later I see it changing lives! Our current kit has everything you need including help from me! Weather you have a storage solution, want to see the specials ~ or are in need of full time income with part time hours~ give me a call or email today at **Mindi Pastrovich, Tupperware Star Director**
Cell/Office: 217-556-1929 Website: www.my.tupperware.com/minndora

On August 7th, Lonnie Bathurst and staff at Ameriprise Financial continued the celebration of customer / client appreciation events as they celebrate their 20th year in business. He hosted golf outing at Litchfield Country Club. Including the lunch at the pavilion, approximately 75 attended including 12 foursomes for a day of golf. Perfect weather and a good time had by all made it a great day



Looking for a great deal on High-Speed Internet? Consolidated Communications has just what you're after. Sign up now and get their 3 Mbps burst rate Internet plan for just \$14.95/month -- and they'll lock in that low price for a full two years. Call 1.800.553.9981 and sign up today!



*Residential limited-time offer expires October 15, 2009, and requires a two-year service commitment. Customer is responsible for applicable taxes and surcharges. Offer may not be available in all areas. Some terms and conditions apply; call for details.

Unemployment Insurance Seminar we will be hosting on 09/04/2009. It will be held at LLCC from 9am to 10:30am on Sept. 4th.

Areas to be covered are: Chargeability, Adjudication, Contesting and Unemployment Claim (Fired and quit), Filing an appeal, Work Opportunity Tax Credit, and a little on Illinois Skills Match. The presenter will be the Asst. Regional Manager for the central region Dave Rogers. Dave is excellent at explaining things so the ordinary person can understand. For more information, contact Bob Malisia at 217-324-2138 ext. 250.

Formals of Litchfield celebrates their **21st Anniversary**. Special Sales are going to be Saturday, August 29th from 9-5pm and We're going to have a Great Wedding Gown Giveaway! We'll be giving away a Free Wedding Gown at 4pm live on the Radio.

Gowns & Accessories will be 50% off for 1 day only.

More Membership News...



REMODELING GOING ON DOWNTOWN. Gary Currie and Bob Levin bought back the store next to Loft and Home Florals and Interiors where they had the jewelry store about 7 years ago. They are in the process of totally restoring it from the front to the back. New façade, in part thanks to the City of Litchfield, and exposed brick wall and beautiful tin ceiling. You might want to poke your head in and have a look. It is over 900 sq ft and will be for rent. It will have new lighting, of course, and would be suitable for almost any retail or office space. For more info call 325-3556.

St. Francis Hospital presents information on their new Patient Room Service:



Hungry? Order What You Want – When You Want it!

Room Service at St. Francis Hospital

Hospital food is getting an extreme makeover at St. Francis Hospital with the launching of patient room service. Shrimp, salad, cheesecake? No problem. Pancakes for dinner? Again, no problem. Made-to-order breakfast is served all day.

When new patients arrive in their room, they receive a restaurant-style menu that includes information on heart-smart choices, carbohydrates and salt. Patients call in their order from their bedside whenever they are hungry. Personal delivery to their room is promised within 45 minutes. The Nutritional Food Service staff delivers meals each day between 6:00 a.m. and 6:00 p.m. Patients are served on china with cutlery.

The staff has spent many hours on re-training as well as efforts toward reconfiguring the hospital kitchen – which included the installation of a new grill, prep area and cold food station - in preparation for the shift to room service. The program represents a huge culture shift in the hospital's kitchen operations. The former hospital food system had been in place for over 40 years where patient meals were cooked and served at the same times each day. With the new room service program, food is prepared fresh, as soon as it's ordered, and is delivered to the patient's room. Patients order when they are hungry and can choose what they want to eat and when they want to eat. The room service plan is convenient for arranging meal times around necessary hospital tests or treatments.

Some hospitalized patients may be feeling too unwell to order their own meal. If a patient has not ordered breakfast by 9 a.m., for example, the staff will go up to the room and ask if they are ready to order a meal or if they prefer to wait. Those who are clearly too ill to order their own meals will automatically receive the hospital's standard meal plan. Food Service also is aware when a patient is on a restricted diet. If a cardiac patient calls in for a cheeseburger and fries, the receptionist will remind the patient that his doctor has ordered a restricted diet and help him select more heart-healthy food choices. Patient guest meals are also available for a small fee.